

novocure™

Novocure (NVCR) Deutsche Bank fireside chat

May 4, 2017

patientforward



forward-looking statements

This presentation contains certain forward-looking statements with respect to the business of Novocure and certain of its plans and objectives, including with respect to the development and commercialization of its lead product candidate, Optune, for a number of oncology indications. These forward-looking statements can be identified in this presentation by the fact that they do not relate only to historical or current facts. Forward-looking statements often use words “expect”, “intend”, “anticipate”, “plan”, “may”, “should”, “would”, “could” or other words of similar meaning. These statements are based on assumptions and assessments made by Novocure in light of industry experience and perception of historical trends, current conditions, expected future developments and other appropriate factors. By their nature, forward-looking statements involve risk and uncertainty, and Novocure's performance and financial results could differ materially from those expressed or implied in these forward-looking statements due to general financial, economic, regulatory and political conditions as well as more specific risks and uncertainties facing Novocure such as those set forth in its Annual Report on Form 10-K filed on February 23, 2017, or in subsequent quarterly filings with the U.S. Securities and Exchange Commission. Should one or more of these risks or uncertainties materialize, or should underlying assumptions prove incorrect, actual results may vary materially from those described in this presentation. Novocure assumes no obligation to update or correct the information contained in this presentation, whether as a result of new information, future events or otherwise, except to the extent legally required.

The statements contained in this presentation are made as at the date of this presentation, unless some other time is specified in relation to them, and service of this presentation shall not give rise to any implication that there has been no change in the facts set out in this presentation since such date. Nothing contained in this presentation shall be deemed to be a forecast, projection or estimate of the future financial performance of Novocure, except where expressly stated.

As of the date of this presentation, Optune is only FDA-approved for glioblastoma, or GBM, and its approval for other indications is not certain. Novocure can provide no assurances regarding market acceptance of Optune or its successful commercialization, and can provide no assurances regarding the company's results of operations or financial condition in the future. This presentation is for informational purposes only and may not be relied upon in connection with the purchase or sale of any security.

PATIENT-FORWARD MISSION

about novocure

global organization

- Headquartered in Jersey
- Five currently active commercial markets (United States, Germany, Switzerland, Israel and Japan)
- Research facility in Israel
- Ownership of IP and sole distribution rights of Tumor Treating Fields
- 450+ employees globally

proven lead product

- Approved in the U.S., EMEA and Japan for the treatment of glioblastoma (GBM)
- Supported by successful EF-14 phase 3 pivotal trial



rich clinical pipeline

- Broadly applicable mechanism of action across multiple solid tumor types
- Recruiting for phase 3 pivotal trials in brain metastases and non-small cell lung cancer
- Completed or ongoing phase 2 pilot trials in:
 - Pancreatic cancer
 - Ovarian cancer
 - Mesothelioma

low-intensity alternating electric fields

USED ALONE OR IN COMBINATION TO TREAT SOLID TUMORS



surgery



- Most frequently employed therapy
- Reduces size of a tumor prior to initiation of additional therapies

radiation



- Kills cells when delivered at high doses
- Injures healthy tissues with numerous potential toxic side effects

pharmacological
treatments



- Includes chemotherapy, targeted therapies and immunology
- Limited by potential side effects
- Resistance can develop over time

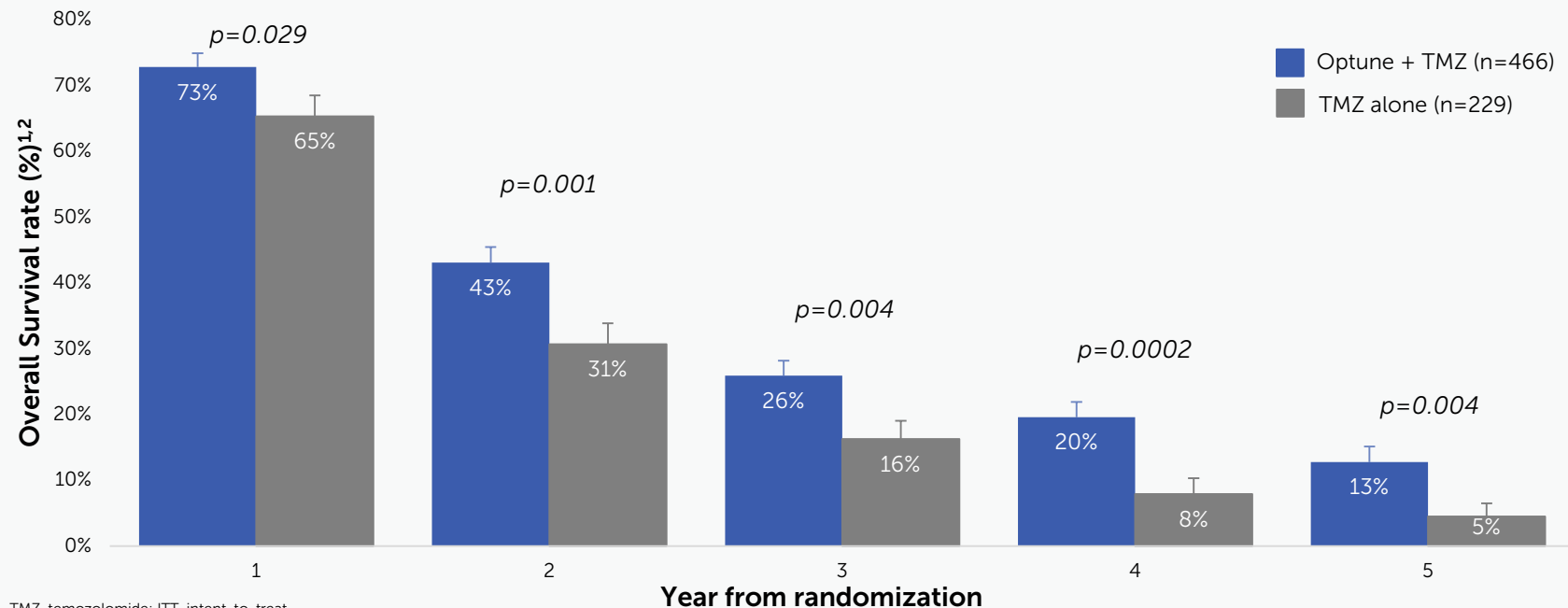
tumor treating fields
(TTFields)



- Low-intensity, alternating electric fields
- Mild side effect profile
- No known resistance or cumulative toxicity
- Can be used in combination with other treatment modalities

EF-14 FIVE-YEAR SURVIVAL ANALYSIS

EF-14 annual survival rates

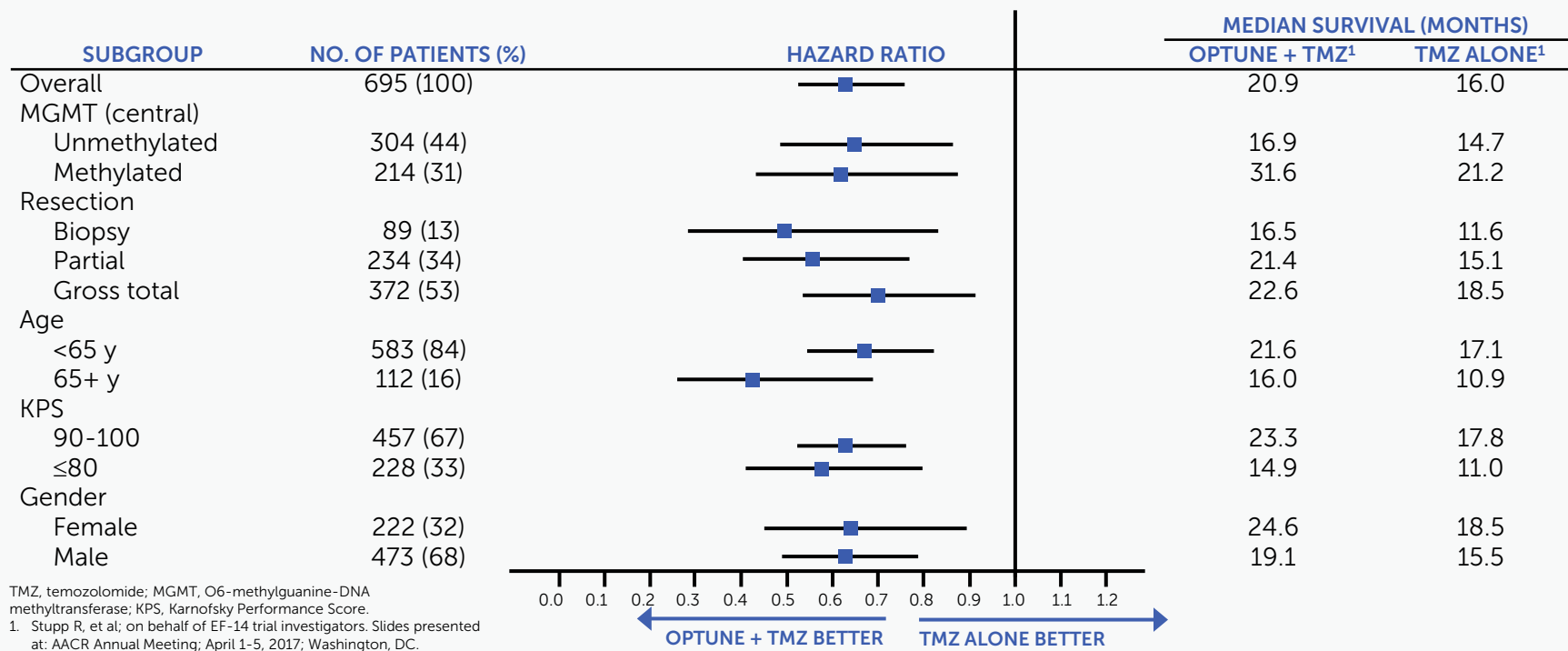


TMZ, temozolomide; ITT, intent-to-treat.

1. Stupp R, et al; on behalf of EF-14 trial investigators. [SNO Abstract LTBK-01]. *Neuro-Oncology*. 2016. In press.
2. Stupp R, et al; on behalf of EF-14 trial investigators. Slides presented at: AACR Annual Meeting; April 1-5, 2017; Washington, DC.

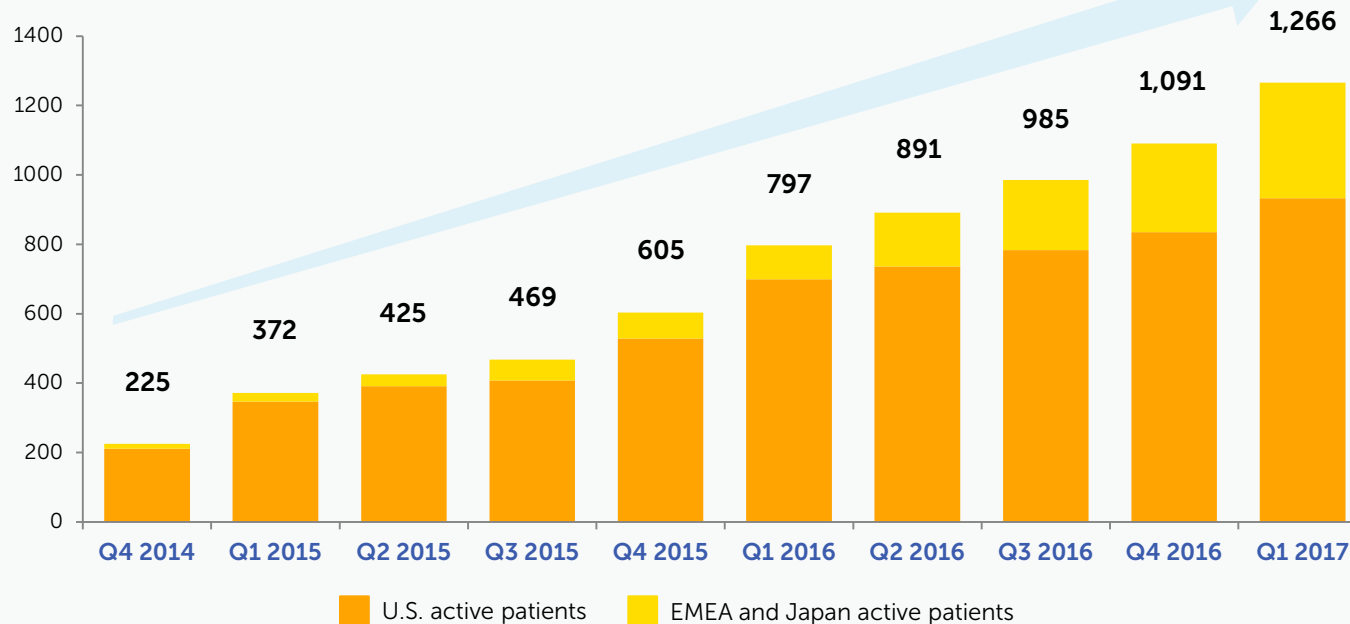
EF-14 FIVE-YEAR SURVIVAL ANALYSIS

EF-14 subgroup analysis



active patient growth

global active patients at period end



9

CONSECUTIVE
 QUARTERS OF
 ACTIVE PATIENT
 GROWTH SINCE
 PRESENTATION OF
 EF-14 DATA

ongoing clinical trials

| | PRE-CLINICAL | PHASE 2 PILOT | PHASE 3 PIVOTAL | EXPECTED NEXT MILESTONE |
|--------------------|--------------|---------------|-----------------|---|
| INDICATIONS | | | | |
| Brain Metastases | | | | METIS trial last patient in 2019 with final data collection in 2020 |
| NSCLC | | | | LUNAR trial last patient in 2019 with final data collection in 2021 |
| Pancreatic Cancer | | | | phase three pivotal trial first patient in 2H 2017 |
| Ovarian Cancer | | | | phase three pivotal trial first patient in 2018 |
| Mesothelioma | | | | STELLAR trial final data collection in 2018 |